



## St. Martin's Engineering College

Dhulapally, Secunderabad

### Research and Development Cell

### Research and Consultancy Projects - Strategy Document

Faculty members are encouraged to submit research projects to various funding agencies.

The following are SOP for Research projects submission.

1. Research area of interests of the faculty members is indentified.
2. Faculty members have to prepare their documentation for their research projects.
3. Faculty need to submit quality research and consultancy projects following SMEC code of ethics.
4. The document has to be submitted to the R& D cell for the approval.
5. The support required for the faculty to submit the proposal will be provided.
6. After the approval of the R& D cell the research project proposal can be submitted to the agency.
7. The flowchart for the Research and Consultancy Projects is attached.

  
CONVENER

✓



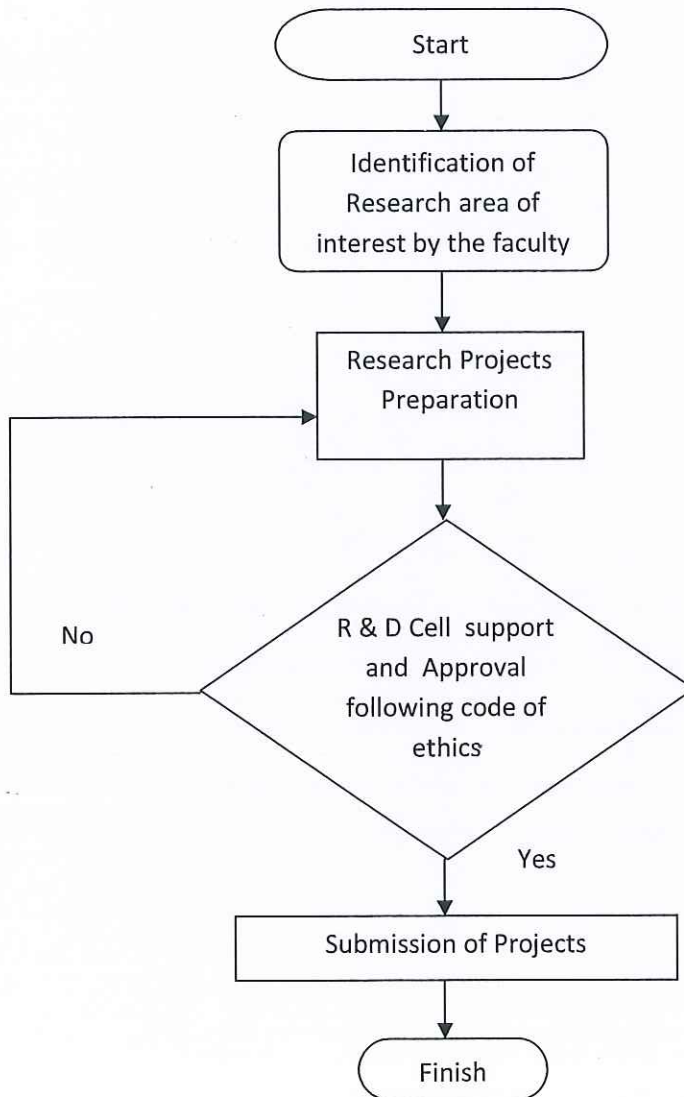


# St. Martin's Engineering College

Dhulapally, Secunderabad

## Research and Development Cell

Flow Chart for Research and Consultancy Projects:



*Handwritten mark*



*Handwritten signature*  
CONVENER



## **St. Martin's Engineering College**

Dhulapally, Secunderabad

### **Research and Development Cell**

### **Research publications - Strategy Document**

Faculty members are encouraged to submit research papers to the reputed journals and conferences. The following are SOP for Research paper publications.

1. Research area of interests of the faculty members is identified.
2. Faculty members have to prepare their documentation for their research papers.
3. Faculty need to submit quality research publications following SMEC code of ethics.
4. The document has to be submitted to the R& D cell for the approval.
5. The support required for the faculty to submit the research paper will be provided.
6. After the approval of the R& D cell the research paper can be submitted to the agency.
7. The flowchart for the Research Publications is attached.

  
**CONVENER**

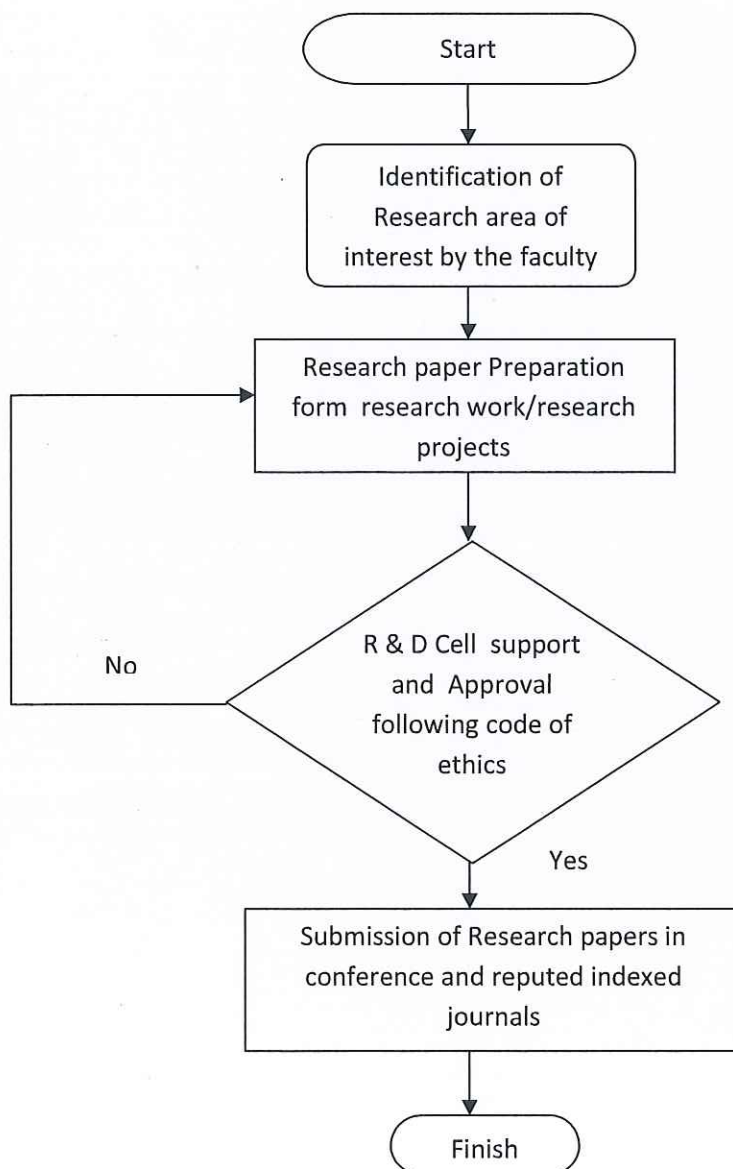


# St. Martin's Engineering College

Dhulapally, Secunderabad

## Research and Development Cell

### Flow Chart for Research Publications:



*[Signature]*  
CONVENER